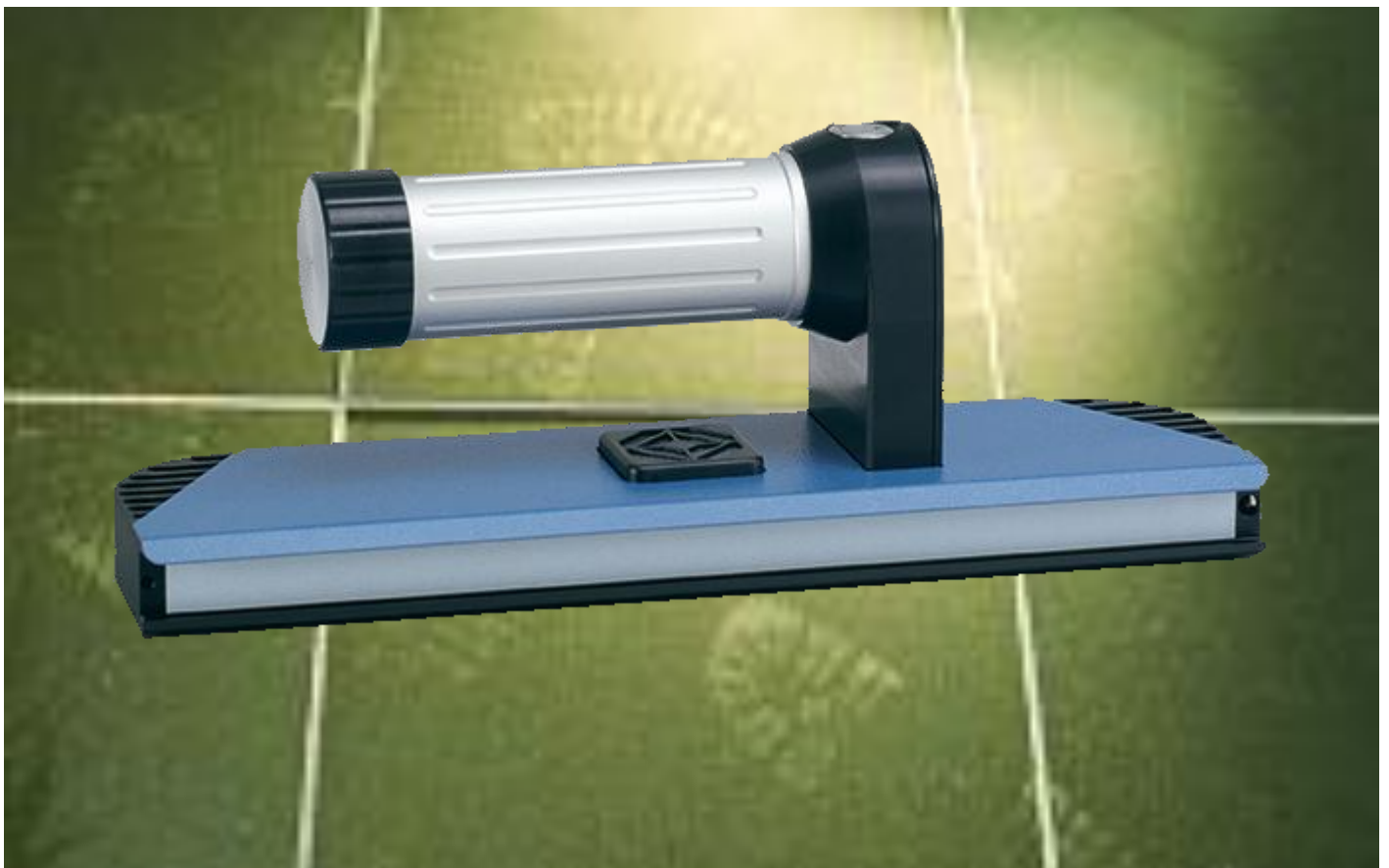


## **NEW:** CRIME SCENE LAMP CSL SHOE



The new Projectina light source **CSL SHOE** completes the range of crime scene products.

The high intensity LED array supports the investigator in their daily work. The handheld lightweight battery powered device is specially designed for shoe print search and documentation.

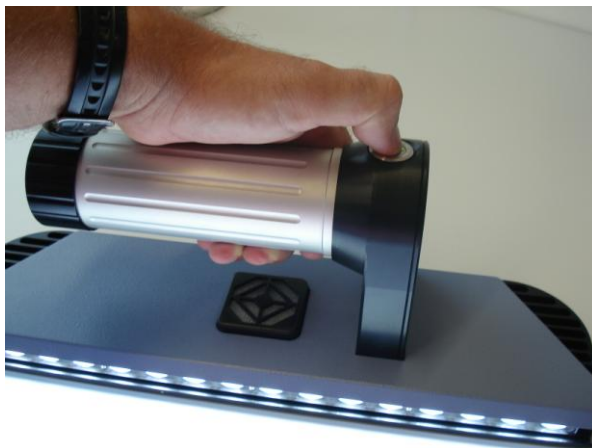
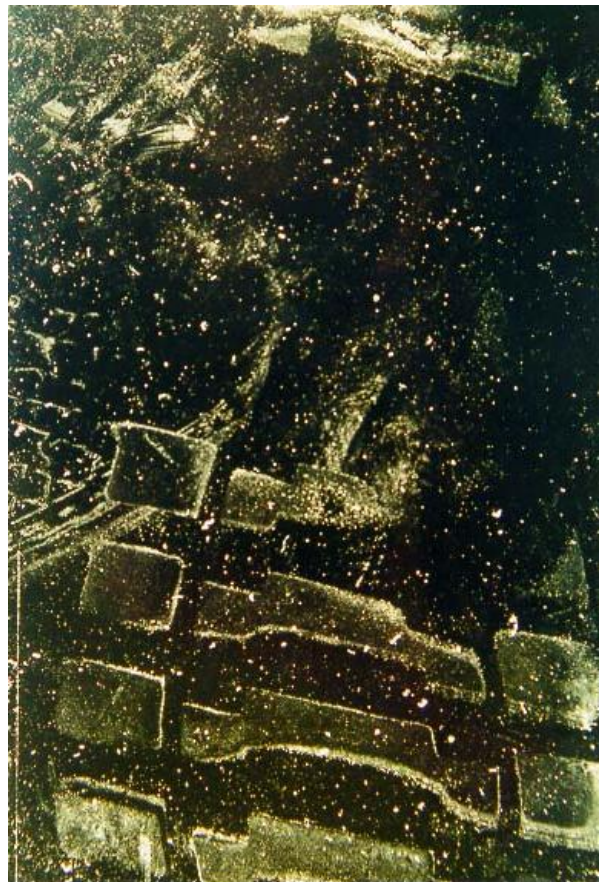
The linear light output provides a sharp and high contrast shoe print on various surfaces. The standard telescope handle makes the use of the CSL SHOE light source very user friendly.

## Technical specification:

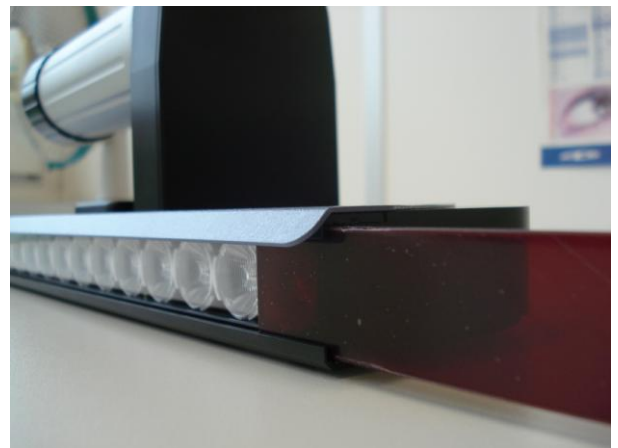
- LED array with 16 high power LED (55 Watt)
- Color: white
- Beam shape, linear, 350 mm width
- Storage battery: Lithium Ion, capacity 14,8 V, 4,3 Ah
- Continuous operation: at 100 % approx. 45 min. at 40 % approx. 120 min.
- Low battery indicator
- Weights:
  - Lamp incl. storage battery: approx. 2,3 kg
- Fan cooled

## Accessories:

- Power supply for permanent mains supply 100-240 VAC
- Telescopic arm for ergonomic securing of evidence
- Color filter red, green, blue and yellow for contrast enhancement



Easy handling and lightweight



Color filters for contrast enhancement

Designed, developed and manufactured in Switzerland.

## Projectina AG

Dammstrasse 2, Postfach  
CH-9435 Heerbrugg  
Schweiz/Switzerland

Phone +41-71-727 28 00

Telefax +41-71-727 28 28

E-mail [projectina@projectina.ch](mailto:projectina@projectina.ch)

Website: [www.projectina.ch](http://www.projectina.ch)