

# Graticool 2

[www.brsl.co.uk](http://www.brsl.co.uk)

Graticool 2 is a compact and versatile stand-alone video overlay unit. Using simple controls and an on-screen menu, hardware generated shapes may be positioned and scaled onto the incoming video:-

- Circles
- Crosshairs
- Box Cursor
- Datum Target
- Scalable Ruler

A real-time intensity profile may be generated using a moveable sample line. Typically used in edge detection or optimising focus.

USB 2.0 interface for uploading complex, user generated shapes or remote control from a PC.

Non-volatile memory to retain overlay screens.

Supplied with overlay generating software.

Custom design service available from BRSL.



## Specification

Video I/O: PAL/CCIR via BNC connectors

Resolution: 768 pixels x 576 lines

Overlay: Any level from black to white

Power: +5VDC via 2.1mm jack socket

Size: 170mm x 90mm x 36mm

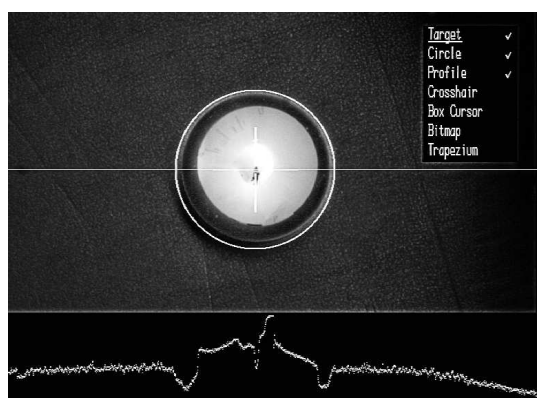
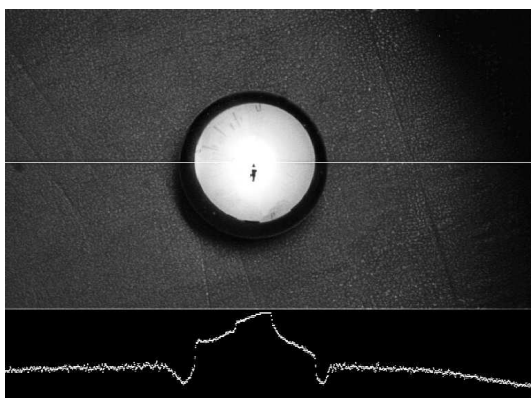
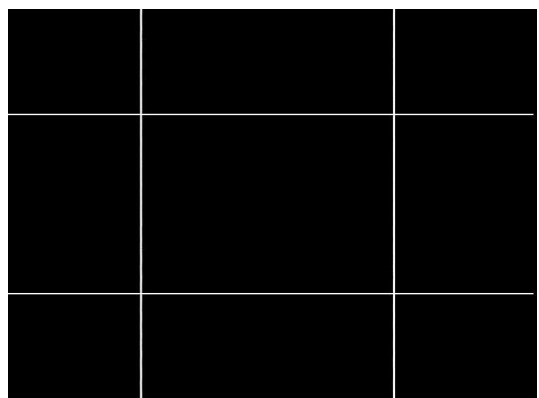
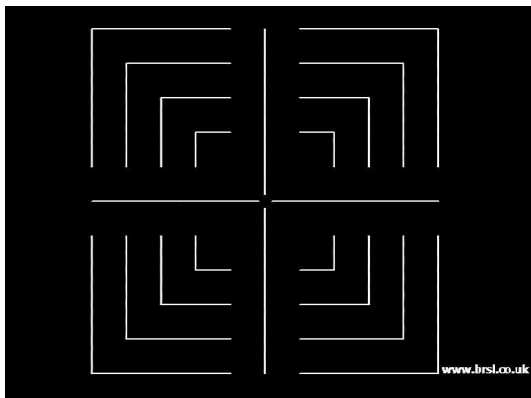
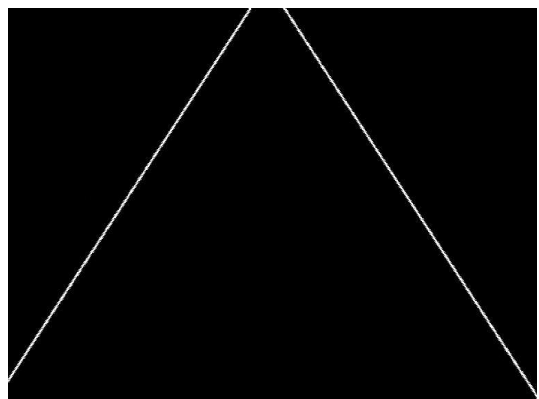
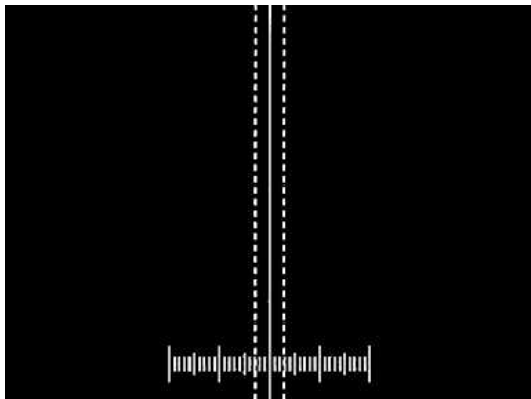
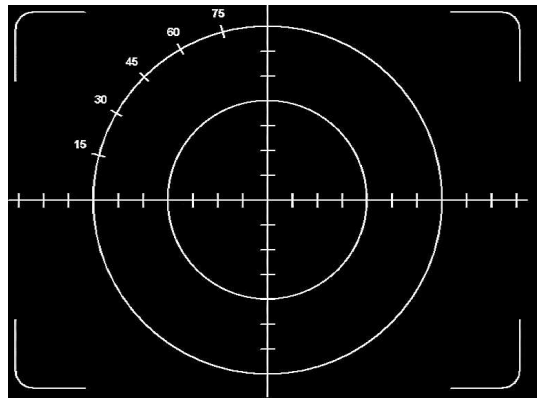
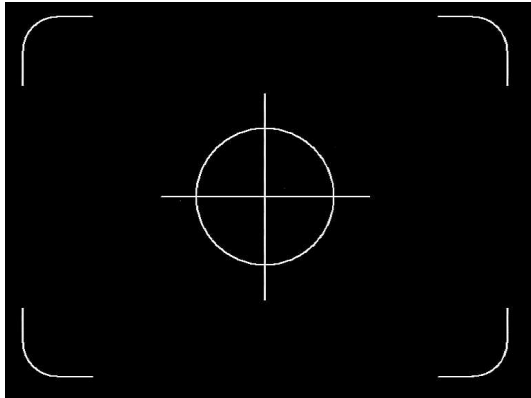
Interface: USB 2.0 via USB B connector

**BRSL**

12 West Mills, Newbury, Berks. RG14 5HG +44 (0) 1635 32827 [brian@brsl.co.uk](mailto:brian@brsl.co.uk)

# Graticool 2

[www.brsl.co.uk](http://www.brsl.co.uk)



12 West Mills, Newbury, Berks. RG14 5HG +44 (0) 1635 32827 [brian@brsl.co.uk](mailto:brian@brsl.co.uk)