

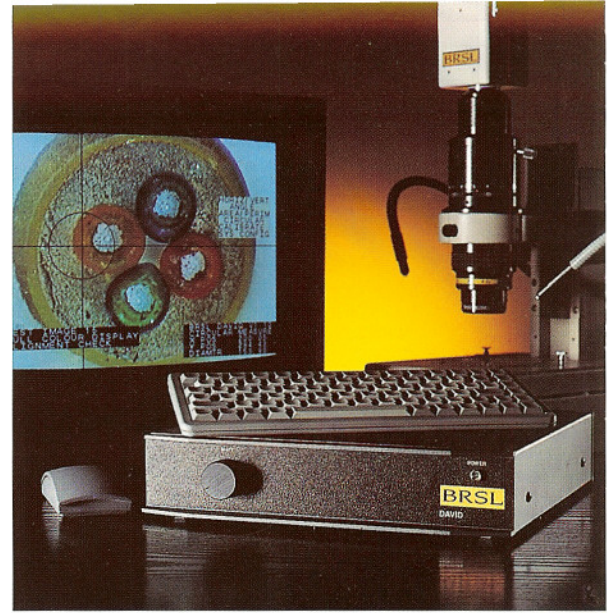
DAVID

Dimensional Analysis and Video Insertion Device

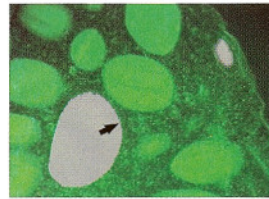
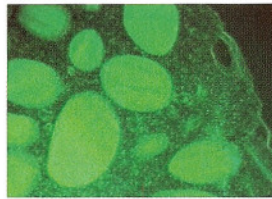
DAVID An instrument used to make dimensional measurements of TV camera images directly from the monitor screen. It will generate overlay graticules, grids, circles, tolerance marks, text, time and date graphics for monitor display. DAVID will also accept and display data from other digital devices, such as transducers and temperature sensors.

DAVID The latest in a line of video based, non-contact dimensional measurement instruments from BRSL.

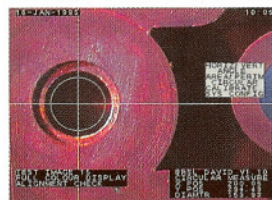
DAVID Is designed for maximum versatility and can be further developed to enhance its flexibility and meet customers special needs.



AREA AND PERIMETER OF IRREGULAR SHAPED OBJECTS

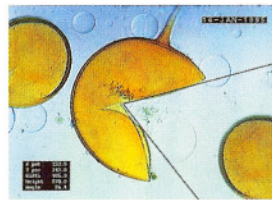


DIAMETERS AND RADII



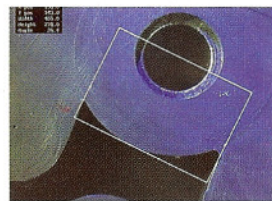
The square pixel format utilised by DAVID allows simple two point calibrations at any angle on the screen with the calibration data held in non-volatile memory within the instrument. Multiple calibrations may be stored to enable accurate measurement at different magnifications e.g. one for each of the lenses on a microscope nosepiece.

ANGLES AND POINT TO POINT DISTANCES



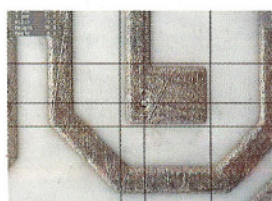
Simple on-screen, mouse activated menus control the setup and operation of the instrument and a keyboard may be used to enter text, calibrations and other control parameters.

LENGTH AND WIDTH OF OBJECTS AT ANY ORIENTATION



The intensity of the overlaid display can be varied from black to white from the front panel Matt control knob.

XY COORDINATES



All measurements taken are displayed on-screen and are available for printing or data logging via a standard RS232 serial port.

BRSL
OUR IMAGE IS
YOUR SUCCESS

SPECIFICATIONS

Input Video:	BNC socket 1 volt 75 ohm composite monochrome/colour 625 line 50 Hz interlaced 4 pin miniature DIN socket Y/C (SVHS)
Output Video	BNC socket 1 volt 75 ohm composite monochrome/colour 625 line 50 Hz interlaced 4 pin miniature DIN socket Y/C (SVHS)
Picture Dimensions:	Full frame, the unit does not blank the input video horizontally or vertically
Measurement Resolution:	Horizontal scale: 768 picture points corresponding to the standard active portion of the line scan for 625 line pictures Vertical scale: 576 lines corresponding to the standard active portion of the frame scan for 625 line pictures.
Measurement Data Insertion Method:	Measurement cursors, graticule patterns etc. are keyed onto the incoming video. The keying level is adjustable by the front panel MATT control from black to peak white. Text, measurement data etc. are displayed in keyed box areas. The intensity of the text and keyed box are adjustable by presets inside the unit.
Mouse Port:	Standard serial 3-button mouse provided by 9 way D plug
Computer Port:	Standard RS232 port provided by 9 way D plug, serial port parameters set by menu
Serial Keyboard Port:	Standard RS232 port provided by 9 way D plug with the addition of a 5 volt output for keyboard power
Aux Port:	Standard RS232 port provided by 9 way D plug for use as printer output or attaching ancillary equipment
PC Keyboard Port:	Miniature 6 pin DIN socket to accommodate "PS2" style keyboard
Real-time Clock:	Time and date provided by battery-backed clock chip
Non-volatile Storage:	User-defined text and settings stored in protected EEPROM
Mains Input:	3 pin IEC plug 220-240V 30W
Dimensions:	275mm wide x 285mm deep x 65mm high

PLEASE CALL US TO DISCUSS YOUR APPLICATION



BRIAN REECE SCIENTIFIC LIMITED

12 West Mills, Newbury, Berkshire RG14 5HG Tel: 01635 32827 Fax: 01635 34542